

# 10FT EZ PILLAR

EZ TUBE FABRIC DISPLAYS

PRODUCT CODE: EZPIL10G



## PRODUCT DESCRIPTION

Introducing our newest EZ Tube Display, the EZ Pillar! This display is very light-weight and is an excellent attention grabber due to its sheer size. The aluminum frame is completely tool free and easily assembled by snapping all of the individual tubes together. The graphic slides over the frame, pulled down until taut, and then is zipped closed. A durable case with wheels for easy transport is included. Grab all the attention at your next show with this massive display!

DISPLAY DIMENSIONS	36"W x 120"H x 36"D
GRAPHIC SIZE	56.128"W x 120"H (2 prints total)

## GRAPHIC MATERIAL

Multi-Stretch Fabric

## GRAPHIC FINISHING

Dye Sublimation with Pillowcase Finishing

## DISPLAY CONSTRUCTION

Aluminum Frame (38mm diameter tubing)

## SHIPPING WEIGHTS & DIMENSIONS

Shipping Weight	25 lbs (stand only) 32 lbs (frame and graphic)
Shipping Dimensions	66.25"L x 12.5"W x 5"H

## LARGE QUANTITY FREIGHT

Freight Shipping	20 boxes per 48"L x 40"W x 31"H skid
Freight Weight	545 lbs (frame only) 685 lbs (frame & graphic)

## GRAPHIC TURN AROUND TIME

2 business days after proof approval

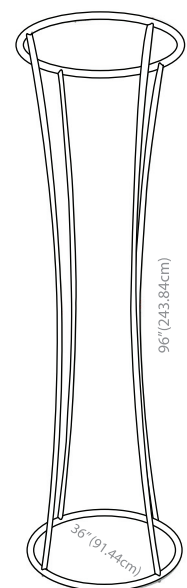
AVAILABILITY	CA
--------------	----



Silverbag Case



1.5" (38mm) dia.  
Frame Tubing



# 10FT EZ PILLAR

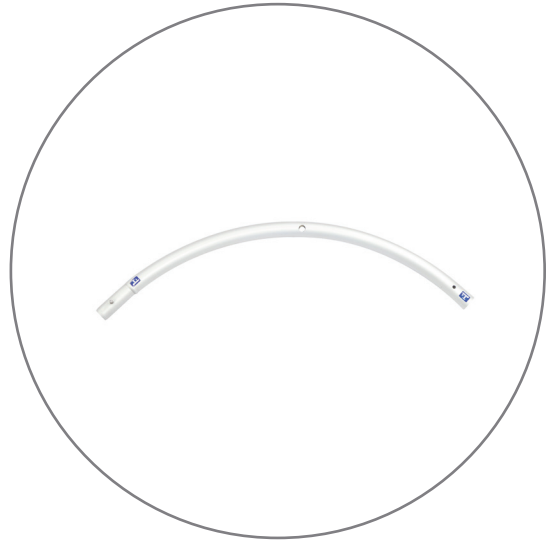
EZ TUBE FABRIC DISPLAYS

PRODUCT CODE: EZPIL10G

## PARTS LIST



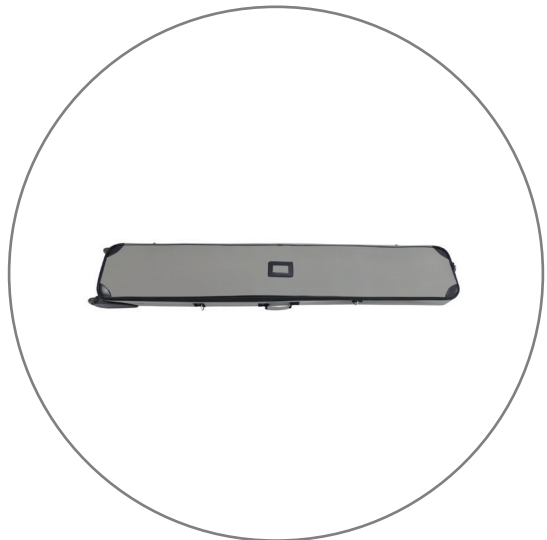
Qty.8 - Vertical  
Sectional Tubing



Qty.8 - Top and Bottom  
Sectional Tubing



Qty.8 - 1.75" Hardware  
w/ Allen Key



Qty.1 - Silverbag

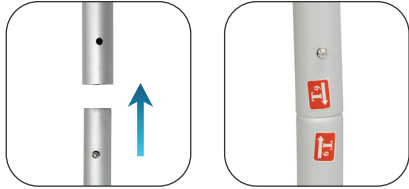
# 10FT EZ PILLAR

EZ TUBE FABRIC DISPLAYS

PRODUCT CODE: EZPIL10G

## SETUP INSTRUCTIONS

### A. Vertical Tubing



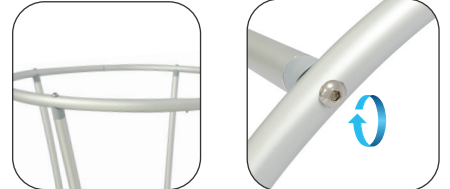
Push down on the button and insert into the receiving tube until the button snaps in place. Match the labels, located on the ends of every piece(ex:T1:T1,T4:T4,etc.).

### B. Top and Bottom Tubing

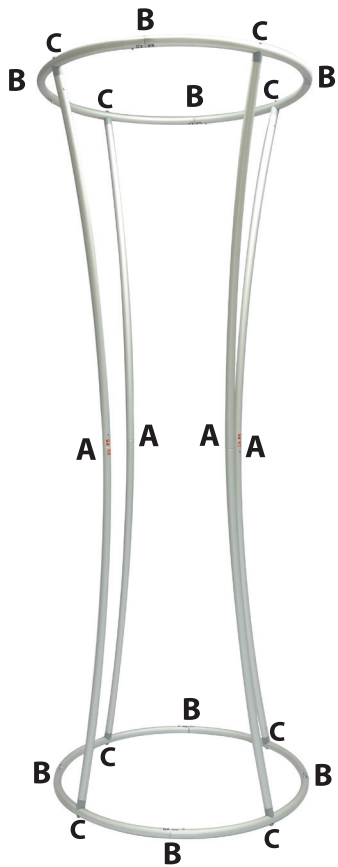


Assemble the top and bottom sections the same way as the vertical tubing. Push, insert, and snap. Match the labels found at each end.

### C. Attach Top and Bottom to Vertical Tubing



Attach the top and bottom sections to the vertical tubing, which screw into the ends of each vertical tube. Allen key is supplied.



### 1. Drape



Drape the top of the frame, starting with the open end (bottom) of the graphic.

### 2. Pull



Pull the graphic all the way down until taut.

### 3. Zip



Zip the bottom shut to maximize tension. The graphic install is complete.